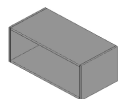
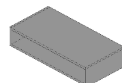


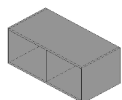
## STACKR



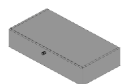
OMARA  
CUPBOARD  
SCHRANK  
1CW 90°45°h40



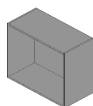
OMARA  
CUPBOARD  
SCHRANK  
1CW-01-88 90°45°h20



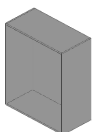
OMARA S PREGRADO  
CUPBOARD WITH PARTITION  
SCHRANK MIT TRENNWAND  
1CW 90°45°h40



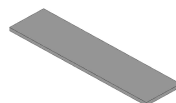
PREDALA ZA OMARO ENOJNO  
TWO DRAWERS FOR SINGLE CUPBOARD  
ZWEI SCHUBLADEN FÜR EINZELSCHRANK  
1CW-01-36 90°45°h20



OMARA  
CUPBOARD  
SCHRANK  
1CW 90°45°h80



OMARA  
CUPBOARD  
SCHRANK  
1CW 90°45°h120

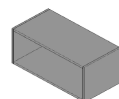


PODNOŽJE OMARE ENOJNO  
BOTTOM DECK  
EINZELSCHRANKSOCKEL

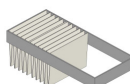
1CW-02-15 45°45°4  
1CW-00-01 90°45°4  
1CW-00-02 135°45°4  
1CW-00-03 180°45°4  
1CW-00-04 225°45°4  
1CW-00-05 270°45°4



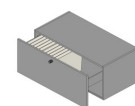
OMARA  
CUPBOARD  
SCHRANK  
1CW 45°45°h40



OMARA HRBET STEKLO  
CUPBOARD WITH GLASS BACK  
SCHRANK MIT GLASRÜCKSEITE  
1CW-00-51 90°45°h40



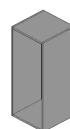
IZVLEČNI OKVIR ZA VISEČE MAPE ZA ENOJNO OMARO  
PULL-OUT HANGING FILE RAIL FOR SINGLE CUPBOARD  
AUSZIEHBARER RAHMEN FÜR HÄNGENDE ORDNER FÜR EINZELSCHRANK  
1CW-01-40



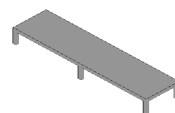
PREDALA ZA VISEČE MAPE  
TWO DRAWERS FOR HANGING FILES  
ZWEI SCHUBLADEN FÜR HÄNGENDE ORDNER  
1CW-01-38 90°45°h40



OMARA  
CUPBOARD  
SCHRANK  
1CW 45°45°h80

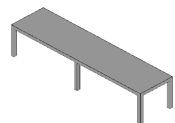


OMARA  
CUPBOARD  
SCHRANK  
1CW 45°45°h120



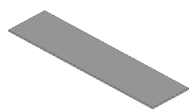
PODNOŽJE OMARE NA NOGAH ENOJNO  
BOTTOM DECK WITH LEGS  
EINZELSCHRANKSOCKEL AUF FÜSSEN

1CW-00-11 90°45°h20  
1CW-00-13 180°45°h20  
1CW-00-15 270°45°h20  
1CW-02-48 90°45°h40  
1CW-02-49 180°45°h40  
1CW-02-50 270°45°h40



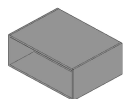
Kovina je vedno bela / Metal is always white / Metall ist immer weiß.

## STACKR

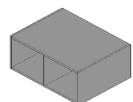


PLOŠČA POKRIVNA ZA OMARO  
FINISHING TOP FOR CUPBOARD  
TOPABDECKUNG FÜR SCHRANK

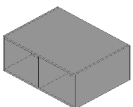
1CW-00-25 45\*45\*h2,2  
1CW-00-26 90\*45\*h2,2  
1CW-00-27 135\*45\*h2,2  
1CW-00-28 180\*45\*h2,2  
1CW-00-29 225\*45\*h2,2  
1CW-00-30 270\*45\*h2,2



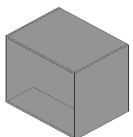
OMARA DVOJNA  
DOUBLE CUPBOARD  
DOPPELSCHRANK  
1CW 90\*68\*h40



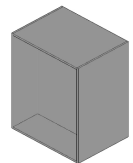
OMARA DVOJNA PREGRADA ENOSTRANSKO  
DOUBLE CUPBOARD WITH ONE-SIDED PARTITION  
DOPPELSCHRANK MIT EINZELTRENNWAND  
1CW 90\*68\*h40



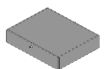
OMARA DVOJNA PREGRADA OBOJESTRANSKO  
DOUBLE CUPBOARD WITH TWO-SIDED PARTITION  
DOPPELSCHRANK MIT BEIDSEITIGER TRENNWAND  
1CW 90\*68\*h40



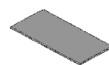
OMARA DVOJNA  
DOUBLE CUPBOARD  
DOPPELSCHRANK  
1CW 90\*68\*h80



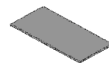
OMARA DVOJNA  
DOUBLE CUPBOARD  
DOPPELSCHRANK  
1CW 90\*68\*h120 W / D



PREDALA ZA OMARO DVOJNO  
TWO DRAWERS FOR DOUBLE CUPBOARD  
ZWEI SCHUBLADEN FÜR DOPPELSCHRANK  
1CW-01-37 90\*34\*h20



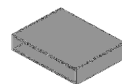
POLICA ZA OMARO ENOJNO  
SHELF FOR SINGLE CUPBOARD  
EINZELSCHRANKBRETT  
1CW-01-43 41\*39\*h2,2  
1CW-01-45 86\*39\*h2,2



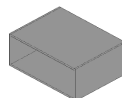
POLICA ZA OMARO DVOJNO  
SHELF FOR DOUBLE CUPBOARD  
DOPPELSCHRANKBRETT  
1CW-01-44 41\*32\*h2,2  
1CW-01-46 86\*32\*h2,2



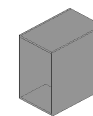
OMARA DVOJNA  
DOUBLE CUPBOARD  
DOPPELSCHRANK  
1CW 45\*68\*h40



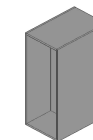
OMARA DVOJNA  
DOUBLE CUPBOARD  
DOPPELSCHRANK  
1CW-02-23 90\*68\*h20



OMARA DVOJNA HRBET STEKLO  
DOUBLE CUPBOARD WITH GLASS BACK  
DOPPELSCHRANK MIT GLASRÜCKSEITE  
1CW-00-71 90\*68\*h40



OMARA DVOJNA  
DOUBLE CUPBOARD  
DOPPELSCHRANK  
1CW 45\*68\*h80

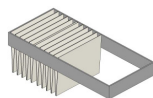


OMARA DVOJNA  
DOUBLE CUPBOARD  
DOPPELSCHRANK  
1CW 45\*68\*h120



PREDALA ZA VISEČE MAPE ZA OMARO DVOJNO  
TWO DRAWERS FOR HANGING FILES FOR DOUBLE CUPBOARD  
ZWEI SCHUBLADEN FÜR HÄNGENDE ORDNER FÜR DOPPELSCHRANK  
1CW-01-39 90\*34\*h40

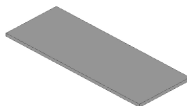
## STACKR



IZVLEČNI OKVIR ZA VISEČE MAPE ZA DVOJNO OMARO  
PULL-OUT HANGING FILE RAIL FOR DOUBLE CUPBOARD  
AUSZIEHBARER RAHMEN FÜR HÄNGENDE ORDNER FÜR DOPPELSCHRANK

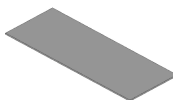
1CW-01-41

PODNOŽJE OMARE DVOJNO  
DOUBLE BOTTOM DECK  
DOPPELSCHRANKSOCKEL

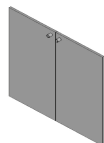


1CW-00-06 90\*68\*4  
1CW-00-07 135\*68\*4  
1CW-00-08 180\*68\*4  
1CW-00-09 225\*68\*4  
1CW-00-10 270\*68\*4

PLOŠČA POKRIVNA DVOJNA  
DOUBLE TOP DECK  
DOPPELABDECKPLATTE



1CW-00-31 45\*68\*2,2  
1CW-00-32 90\*68\*2,2  
1CW-00-33 135\*68\*2,2  
1CW-00-34 180\*68\*2,2  
1CW-00-35 225\*68\*2,2  
1CW-00-36 270\*68\*2,2



VRATA SET ROČAJ ZGORAJ  
DOOR SET WITH HANDLE AT THE TOP  
TÜREN-SATZ GRIFF OBEN

1CW-00-98 90\*2\*h40  
1CW-01-22 90\*2\*h80  
1CW-01-29 90\*2\*h120



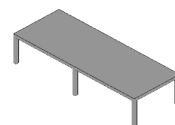
VRATA ENOJNA  
SINGLE DOOR  
EINZELTÜR

1CW-01-02 45\*2\*h40 L  
1CW-01-01 45\*2\*h40 R

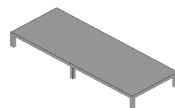


PREGRADA VERTIKALNA PREMIČNA  
FLEXIBLE VERTICAL PANEL  
BEWEGLICHE SENKRECHTE TRENnwAND

1CW-02-47 42\*h40



PODNOŽJE OMARE NA NOGAH DVOJNO  
DOUBLE BOTTOM DECK WITH LEGS  
DOPPELSCHRANKSOCKEL AUF FÜSSEN



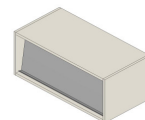
1CW-02-51 90\*68\*h40  
1CW-02-52 180\*68\*h40  
1CW-02-53 270\*68\*h40  
1CW-00-16 90\*68\*h20  
1CW-00-17 180\*68\*h20  
1CW-00-18 270\*68\*h20

Kovina je vedno bela / Metal is always white / Metall ist immer weiß.



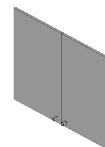
PODSTAVEK NA KOLESIH  
BOTTOM DECK WITH WHEELS  
SOCKEL AUF RÄDERN

1CW-02-58 90\*45\*h19



LOPUTA ZA OMARO IZLOŽBENO  
DISPLAY HOLDER FOR CUPBOARD  
ANZEIGEHALTER AUSSTELLUNG

1CW 90\*45\*h40



VRATA SET, ROČAJ SPODAJ  
DOOR SET WITH HANDLE AT THE BOTTOM  
TÜREN-SATZ GRIFF UNTEN

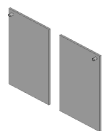
1CW-00-99 90\*2\*h40  
1CW-01-23 90\*2\*h80  
1CW-01-30 90\*2\*h120



VRATA ZA PREGRADO  
DOOR FOR PARTITION  
TRENnwANDTÜR

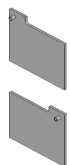
1CW-01-06 45\*2\*h40 L  
1CW-01-05 45\*2\*h40 R

## STACKR



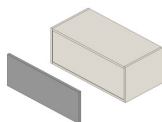
VRATA ENOJNA  
SINGLE DOOR  
EINZELTÜR

1CW-01-26 45\*2\*h80 L  
1CW-01-25 45\*2\*h80 R



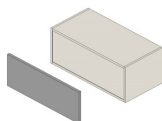
VRATA ZA POŠTO  
DOOR FOR MAILBOX  
POST-TÜR

1CW-01-19 45\*2\*h40 L  
1CW-01-18 45\*2\*h40 R



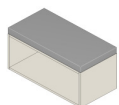
HRBTIŠČE TAPECIRANO AKUSTIČNO  
BACKPANEL ACOUSTIC+FABRIC  
HINTERWAND TAPEZIERT AKUSTISCH

1CW-01- 45\*h40  
1CW-01- 90\*h40  
1CW-01- 45\*h80  
1CW-01- 90\*h80  
1CW-01- 45\*h120  
1CW-01- 90\*h120



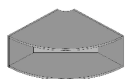
HRBTIŠČE NARAVNA PLUTA  
BACKPANEL NATURAL CORK  
HINTERWAND NATURKORK

1CW-02-96 90\*2\*h40  
1CW-02-97 90\*2\*h80  
1CW-02-98 90\*2\*h120



BLAZINA ZA OMARO  
CUSHION FOR CUPBOARD  
KISSEN FÜR SCHRANK

1CW-01-70 90\*45\*h7



OMARA KROŽNA 90°  
CUPBOARD ROUNDED 90°  
SCHRANK RUND 90°

1CW-02-43 113\*68\*h40



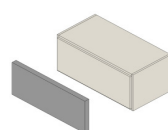
VRATA ENOJNA  
SINGLE DOOR  
EINZELTÜR

1CW-01-32 45\*2\*h120 L  
1CW-01-33 45\*2\*h120 R



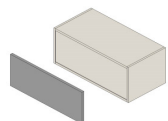
VRATA ZA PREGRADO ZA POŠTO  
DOOR FOR PARTITION FOR MAILBOX  
TRENWANDTÜR FÜR POST

1CW-01-21 45\*2\*h40 L  
1CW-01-20 45\*2\*h40 R



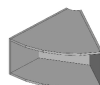
HRBTIŠČE MAH  
BACKPANEL MOSS  
HINTERWAND MOOS

1CW-02-93 90\*h40  
1CW-02-94 90\*h80  
1CW-02-95 90\*h120



HRBTIŠČE BELA TABLA  
BACKPANEL WHITE BOARD  
HINTERWAND WEISSWANDTAFEL

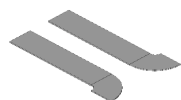
1CW-02-99 90\*h40  
1CW-03-00 90\*h80  
1CW-03-01 90\*h120



OMARA KROŽNA 60°  
CUPBOARD ROUNDED 60°  
SCHRANK RUND 60°

1CW-02-42 81\*68\*h40

## STACKR



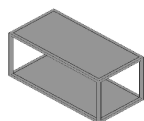
PODNOŽJE OMARE KROŽNO  
ROUNDED BOTTOM DECK  
SCHRANKSOCKEL RUND

1CW-02-28	60° + 90°68*h4	R
1CW-02-29	60° + 90°68*h4	L
1CW-02-31	90° + 90°68*h4	R
1CW-02-30	90° + 90°68*h4	L
1CW-02-33	60° 180°68*h4	R
1CW-02-32	60° 180°68*h4	L
1CW-02-35	90° 180°68*h4	R
1CW-02-34	90° 180°68*h4	L



PLOŠČA POKRIVNA KROŽNA  
ROUNDED UPPER DECK  
DECKPLATTE RUND

1CW-02-37	60° + 90°68	R
1CW-02-36	60° + 90°68	L
1CW-02-39	90° + 90°68	R
1CW-02-38	90° + 90°68	L
1CW-02-41	60° + 180°68	R
1CW-02-40	60° + 180°68	L
1CW-03-25	90° + 180°68	R
1CW-03-26	90° + 180°68	L



REGAL KOVINSKI  
STEEL CUPBOARD RACK  
METALLREGALMETALLHINTERWAND FÜR REGAL H40

1CW-02-21	90°45*h40
-----------	-----------



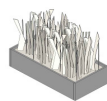
HRBTIŠČE KOVINSKO ZA REGAL H40  
METAL BACK FOR RACK H40  
METALLHINTERWAND FÜR REGAL H40

1CW-02-62	90°h40
-----------	--------



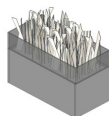
RASTLINJAK  
PLANTER  
ÜBERTOPF

1CW-01-47	90°45*h40
1CW-01-48	90°68*h40



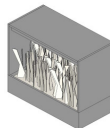
RASTLINJAK  
PLANTER  
ÜBERTOPF

1CW-01-49	90°45*h20
1CW-01-50	90°68*h20



RASTLINJAK  
PLANTER  
ÜBERTOPF

1CW-02-59	90°45*h40
1CW-02-60	90°68*h40



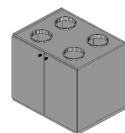
RASTLINJAK  
PLANTER  
ÜBERTOPF

1CW-02-14	90°45*h80
1CW-02-61	90°68*h80



OMARA S KOŠI ZA ODPADKE  
CUPBOARD WITH WASTE PAPER BINS  
SCHRANK MIT DEN PAPIERKÖRBEIN

1CW-	90°45*h80
------	-----------



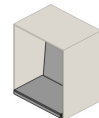
OMARA S KOŠI ZA ODPADKE  
CUPBOARD WITH WASTE PAPER BINS  
SCHRANK MIT DEN PAPIERKÖRBEIN

1CW	90°68*h80
-----	-----------



FOTELJ - OKVIR  
SIT-INN FRAME  
POLSTERSESSEL RAHMEN

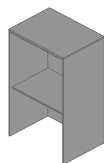
1CW-02-72	90°68*h120
-----------	------------



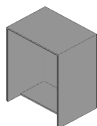
BLAZINA ZA FOTELJ  
SIT-INN CUSHION  
POLSTERSESSEL KISSEN

1CW-02-73	90°68*h120
-----------	------------

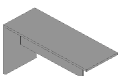
## STACKR



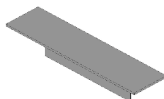
NADOMESTNA MIZA ZA KRATKO DELO  
CRASH DESK  
ERSATZTISCH FÜR KURZARBEITEN  
1CW 135\*68\*h200  
1CW 90\*68\*h200



TELEFONSKA GOVORILNICA  
PHONE-HOME  
TELEFONZELLE  
1CW 90\*68\*h80



PULT ZA DRUŽENJE  
HANG-OUT  
HERUMHÄNGE-TAFEL  
1CW 135+45\*68\*h108  
1CW 180+45\*68\*h108



PULT ZA DRUŽENJE  
HANG-OUT  
HERUMHÄNGE-TAFEL  
1CW 270\*68\*h108

### IZVEDBE • FINISHES • AUSFÜHRUNGEN

SLO	EN	GER
<b>melamin</b>	<b>melamine</b>	<b>Melaminfolie</b>
hrast	oak	Eiche
oreh	walnut	Walnuss
<b>beli</b>	<b>white</b>	<b>Weiß</b>
<b>lakirano</b>	<b>laquered</b>	<b>Lackiert</b>
RAL 1013	RAL 1013	RAL 1013
RAL 2004	RAL 2004	RAL 2004
RAL 6016	RAL 6016	RAL 6016
RAL 1020	RAL 1020	RAL 1020
RAL 7032	RAL 7032	RAL 7032
RAL 6021	RAL 6021	RAL 6021
RAL 1011	RAL 1011	RAL 1011
RAL 1016	RAL 1016	RAL 1016
RAL 7035	RAL 7035	RAL 7035
RAL 3007	RAL 3007	RAL 3007
RAL 6018	RAL 6018	RAL 6018

### OPIS • DESCRIPTION • BESCHREIBUNG

#### SLO

Vse leseni deli sistema STACKR so izdelani iz ivernih plošč oplemenitenih z melaminsko folijo oziroma lakirani s strukturo barvo po priloženi RAL shemi. Vsi robovi so zaščiteni z 2mm robnim trako ter zaokroženi z radijem 2mm. Vertikalni elementi so debeline 18 mm, horizontalni elementi, pokrivne plošče in police pa 22 mm. Elemente sistema STACKR je možno med seboj poljubno sestavljati s pomočjo posebnih spojnih elementov. Tako sestavljanje kot razstavljanje elementov je enostavno in brez posebnega orodja. Željene sestave lahko gradimo na 4cm debelem lesenem podnožju ali pa na 20 oz. 40 cm visokem kovinskem podnožju z leseno vložno ploščo. Enojne omarice imajo obdelano tudi hrbtišče, tako da lahko stojijo tudi na sredini prostora. Hrbtišče enojnih omar je glede na obod umaknjeno navznoter in tako pripravljeno za montažo dodatnih naveskih hrbtišč - plute, bele table, akustičnega hrbtišča, maha...Oblazineni elementi so lahko tapecirani v enake tkanine kot elementi STONEHENGE. Vsi kovinski elementi so lakirani v beli barvi.

#### EN

All STACKR wooden parts are made of melamine faced chipboard or are lacquered in colours written below according to the RAL colour scale. All edges have 2mm ABS edges. Vertical elements are 18mm thick, horizontal elements (finishing tops and shelves) are 22mm thick. STACKR elements can be assembled freely using special connecting elements. Assembling as well as disassembling is very simple and does not require any special tools. Desired cupboard sets can be assembled on 4cm thick wooden base or on 20cm or 40cm high metal base with wooden insert panel. Single cupboards can stand in the middle of a room, as their backs are treated as well. Single cupboard backs are inside the carcass and ready to be fitted with additional specific backs (cork, whiteboard, acoustic, moth, etc.). Upholstered elements can be upholstered in the same fabrics as STONEHENGE elements. All metal elements are white.

#### GER

Alle Holzteile des STACKR-Systems sind aus Melaminfolienbeschichteten Spanplatten mit abschließenden ABS-Kanten hergestellt, bzw. mit der Strukturfarbe gemäß der beigefügten RAL- Schema lackiert. Alle Kanten sind mit 2 mm Kantenband geschützt und kreisförmig im Radius von 2 mm abgerundet. Vertikalelemente sind 18 mm dick, und Horizontalelemente, Abdeckplatten und Bretter sind 22 mm dick. STACKR-Systemelemente können mittels spezieller Verbindungselemente beliebig miteinander verbunden werden. Die Montage, als auch Demontage, der Verbindungselemente ist einfach und kann ohne Spezialwerkzeuge erfolgen. Die beliebigen Bauelemente können auf 4 cm dickem Holzsockel oder auf dem 20 bzw. 40 cm hohen Metallsockel mit Holzeinlegeplatte zusammengestellt werden. Die Einzelschrank-Hinterwände sind auch fertig bearbeitet und können in Raummitte stehen. Die Einzelschrank-Hinterwände sind mit Hinsicht auf den Umfang nach innen verlegt und dadurch für den Einbau zusätzlicher Zweckhinterwände - Kork, weiße Tafel, akustische Hinterwände, Moos ... die tapezierten Elemente können mit gleichem Stoff wie die Elemente der Stonehenge tapeziert werden. Alle Metallteile sind weiß lackiert.

Tehnični opis tkanin - stran 41

Fabric Technical data - page 41

Technische Daten - Beschreibung der Stoffe - Seite 41